

OWNERS MANUAL



**MODEL NO.
625.344800**

**MODEL NO.
625.344810**



CAUTION

READ THIS MANUAL
CAREFULLY
BEFORE YOU USE
YOUR PURIFIER

IF YOU HAVE ANY
QUESTIONS ABOUT
THIS PRODUCT CALL
TOLL-FREE
1-800-426-9345

www.KenmoreWater.com

**SAVE THIS
MANUAL**

Kenmore Countertop Water Purifier

– HOW IT WORKS –

– CARE OF –

– REPAIR PARTS –

Sears, Roebuck and Co., Hoffman Estates, IL 60179 USA

7224613 (03/01)

LIMITED WARRANTY

FULL ONE YEAR WARRANTY ON WATER PURIFIER (except carbon filter)

For one year from the date of purchase, Sears will replace this Water Purifier (except carbon filter) free of charge, if defective in material or workmanship.

WARRANTY SERVICE IS AVAILABLE BY SIMPLY RETURNING THE WATER PURIFIER TO THE NEAREST SEARS STORE THROUGHOUT THE UNITED STATES.

This warranty gives you specific legal rights, and you may have other rights which vary from state to state.

Sears, Roebuck and Co., D/817 WA, Hoffman Estates, IL 60179

WARNING - RULES FOR SAFE OPERATION OF YOUR WATER PURIFIER

◆ **Before using your purifier, read these rules and instructions carefully.**

◆ This Purifier is recommended for use on potable water supplies only. DO NOT attempt to purify and make safe drinking water from non-potable (not for drinking) water sources. DO NOT use for anything other than purifying water.

◆ DO NOT use for cooking, heating, humidifying, or any other purposes except distilling water.

◆ Use your Purifier indoors on a dry, level surface, away from other heat sources.

◆ DO NOT use the Purifier if damaged, or if the electrical cord is defective or wet.

◆ Plug the Purifier into a 120 volt AC house electrical outlet only.

◆ DO NOT operate the Purifier nearby a surface edge where it could tip, fall, be accidentally bumped, or pulled over the edge by small children.

◆ DO NOT operate in a moving vehicle.

◆ Use in a well ventilated area. Provide clearance between the purifier and walls and the cabinets above.

◆ DO NOT move the Purifier while it is operating or cooling.

◆ DO NOT FILL ABOVE THE MAX FILL LINE for good quality product water, and to prevent overflow of the storage bottle.

◆ NEVER REMOVE THE COVER WHILE THE PURIFIER IS ON OR IF THE FAN IS RUNNING. Allow the Purifier to cool at least 30 minutes after a cycle is over. **Boiling water or steam will cause severe burns.**

◆ **KEEP CHILDREN AWAY. HOT, BOILING water and steam in the Purifier will scald if spilled on skin.**

◆ The heating element is in the base of the Purifier and, although insulated, the bottom does get hot during use. **Do not touch the bottom**, and be sure to set on a surface able to withstand this heat.

◆ DO NOT hang the electrical cord over the edge of the counter, pinch in a drawer, lay on a burner or other hot surface.

◆ Unplug the Purifier electrical cord from the wall outlet when cleaning base unit.

◆ DO NOT immerse any part of the Purifier in water.

◆ To clean the outside of the Purifier, wipe with a damp cloth. Rinse boiling chamber after every use. Use Distiller Cleaner only on the inside of the boiling chamber, when needed.

◆ DO NOT plug steam vent on top of kettle cover.

◆ DO NOT operate purifier without first adding water.

◆ Do not use with water that is microbiologically unsafe or of unknown quality without adequate disinfection before or after the system. Systems certified for cyst reduction may be used on disinfected water that may contain filterable cysts.

A. A short power supply cord is provided to reduce the risk of becoming entangled in, or tripping over a longer cord.

B. An extension cord may be used if care is exercised in its use.

C. If an extension cord is used, (1) the marked electrical rating must be at least as great as the electrical rating of the appliance, (2) the longer cord should be arranged so it will not drape over the

counter or table top where it can be pulled on by children, or tripped over unintentionally.

D. This appliance has a polarized plug (one blade is wider than the other). To reduce to risk of electrical shock, the plug will fit in a polarized outlet only one way. If the plug does not fit fully in the outlet, reverse the plug. If it still does not fit, contact a qualified electrician. Do not modify the plug in any way.

The physiological effects of the operation of this appliance, beneficial or otherwise, have not been investigated by Underwriters Laboratories Inc. See Product Data Sheet for test data obtained from an independent laboratory.

HOW YOUR PURIFIER WORKS

The Purifier distills and turns ordinary tap water into clean, clear purified water. Uses for purified water include drinking, cooking, ice cubes, salt-restricted diets, baby formulas, steam irons, photo processing, and cleaning contact lenses.

By heating water to boiling, the water is changed to steam, which rises. As the steam cools and turns back

into water, it is collected in the carafe. Impurities are left behind in the kettle.

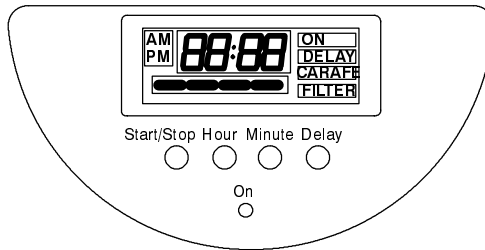
Purified water will remain fresher-tasting if it is kept tightly capped. Also shaking the carafe before pouring will aerate the water and make it taste better.

Order extra carafes from Sears (see page 7) so you can chill one bottle of purified water while you make more.

STOPPING UNIT DURING OPERATION (MODEL 344800)

1. Remove Kettle.
 2. Unplug unit from outlet.
-

OPTIONAL ELECTRONICS (MODEL 344810)



Control Buttons

From left to right the control buttons are "START/STOP", "HOUR", "MINUTE", and "DELAY".

Time Setting

When the time is blinking in the display window indicates that the supply voltage has been interrupted. The time will continue to run but will only appear continuously in the display window after resetting.

Setting the time display:

Hours:

To move the hours upwards by one hour: press the "HOUR" button quickly once. To fast forward the time: press for at least one second. After completion the time display will blink for another 3 seconds before the time is finally set.

Minutes:

To move the minutes upwards by one minute: press the "MINUTE" button quickly once. To fast forward the time: press for at least one second. After completion the time display will blink for another 3 seconds before the time is finally set.

12-24 Hour Mode:

Pressing the "HOUR" and "MINUTE" buttons simultaneously for 5 seconds enables change over from 12 hour mode to 24 hour mode (or from 24 hour mode to 12 hour mode). Further change overs are only possible

after 5 seconds (and only when the "HOUR" and "MINUTE" buttons are pressed as described above). In the 12 hour mode the display shows AM or PM.

Setting the Delay Function/Checking Delay Status:

Setting:

Press the "DELAY" button once. The Delay Start Time and "DELAY" indicator appear in the display window.

The "Delay Start Time" can be changed as follows:

Hours: Press the "HOUR" button once, after which the hour figure blinks for 3 seconds in the display window. During these 3 seconds the hours can be forwarded by one hour by pressing the hour button once. By continuous pressing of the button, the time can be fast-forwarded.

Minutes: Press the "MINUTE" button once, after which the minutes figure blinks for 3 seconds in the display window. During these 3 seconds the minutes can be forwarded by one minute by pressing the minute button once. By continuous pressing of the button, the time can be fast-forwarded.

If the time is correctly set, after 3 seconds the time reappears with "DELAY" in the display. The "DELAY" indicates that the delay time function is activated. To deactivate the delay time function, press the "DELAY" button twice within a period of 3 seconds, or press the "DELAY" button once while in the delay mode. After completion, "DELAY" will not appear next to the time in the display window.

OPTIONAL ELECTRONICS (MODEL 344810)

Check Delay Time Status:

Press the "DELAY" button once. The Delay Start Time appears in the display window with "DELAY" in the display. After 3 seconds the current time reappears.

Switching the Purifier On/Off:

To turn the Purifier on or off, press the "ON/OFF" button. When turning the Purifier on, "ON" appears in the display window and the Red Indicator Light appears. After turning the Purifier off, the Red Indicator Light turns off.

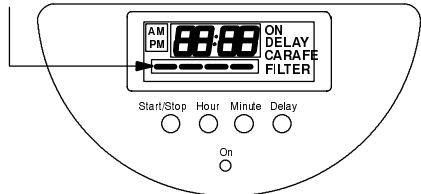
Carafe Indicator:

If the carafe is not in the correct position, the Red Indicator Light blinks and "CARAFE" blinks in the display window for 90 seconds. Then the unit will shut off. If the carafe is removed from the base unit during operation, the "CARAFE" indicator will appear in the display for 90 seconds. At 90 seconds the unit will shut off. To restart, place the carafe in position and press "START".

Kettle Indicator:

If the kettle is removed during a cycle, the unit will shut off immediately. The red indicator light will blink continuously if kettle is not correctly positioned.

Filter Status Indicator / Filter Change Indicator:



The Carbon Filter Indicator shows four status bars to indicate filter life. Four bars indicate a new filter and zero bars indicate the filter needs to be changed. In addition to the bars a "FILTER" indicator (not the bars) will flash in the display when the filter needs to be changed. To reset the Filter Status Bars to new filter status, press and hold the delay button for 7 seconds.

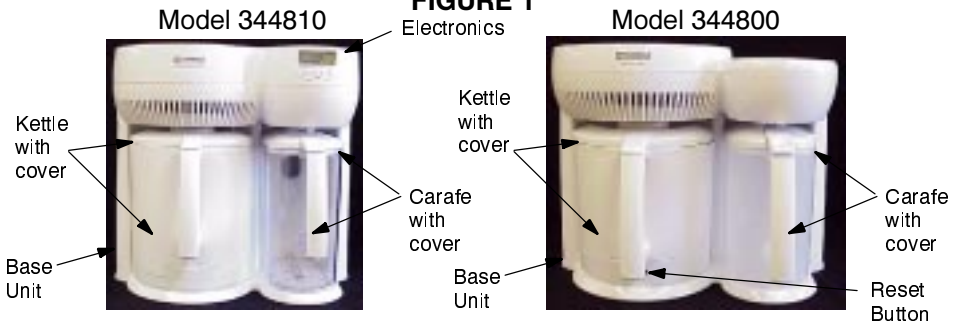
BEFORE USING WATER FROM YOUR WATER PURIFIER FOR THE FIRST TIME

Although care is taken so your Purifier and plastic storage bottle are clean, some harmless matter may remain from manufacturing, packaging, or shipping. This could leave an unwanted taste or odor in the purified water the first time you use it. To remove any taste or odor causing matter, do the following.

1. Set the Purifier on your counter or tabletop.
2. Remove kettle from its receptacle.
3. Remove kettle cover by twisting counter clockwise, then lift.
4. Rinse and fill the kettle to the "max" line.
5. Replace the cover onto the kettle. Twist clockwise to lock. Plug the kettle into the base receptacle.
6. Wash and rinse carafe and lid.
7. The carbon filter (model 344810 only) is packed in a separate plastic bag. Remove the cover of the carbon filter housing from inside the carafe lid. Remove carbon filter from bag and place into housing. Replace cover on housing, and replace lid on carafe (see view on page 6).
8. **IMPORTANT:** Before using the carbon filter rinse the filter under purified water for 30 seconds, so that it is wet on all surfaces. If the filter ever dries out as a result of not using the purifier, remove it and rinse it to re-wet it down.
9. Place the carafe on the base unit, and plug the power cord into a wall outlet.
10. For **model 344800**, press the "RESET" button to turn the Purifier on. Run one batch of water to the carafe. Unplug the **kettle** from the base unit.
11. For **model 344810**, press the "START" button to turn the Purifier on. Run one batch of water to the carafe. Press "STOP" button to stop purifier.

continued, page 5.

FIGURE 1
Electronics



BEFORE USING WATER FROM YOUR WATER PURIFIER FOR THE FIRST TIME

continued from page 4

12. Steam will continue to pass through for a few minutes. After unit cools, rinse out kettle.
13. Shake the carafe, then discard the first batch of water which may have some harmless carbon fines (very fine black particles) in it from the filter.

MAKING PURIFIED WATER

1. Set the Purifier on your countertop or table.
2. Unplug the kettle from the base (Figure 1). Twist the cover counter-clockwise to remove, and set aside.
3. Rinse and fill the kettle with tap water up to the max. fill line.
6. Plug the power cord into any 120 volt outlet.
7. Press the reset or start button. The red indicator light will illuminate.

When the cycle is over the Purifier turns off automatically. AFTER THE FAN MOTOR GOES OFF, WAIT AT LEAST 30 MINUTES BEFORE REMOVING THE COVER...

NOTE: You can purify less than the full amount. Use this chart as a guide. DO NOT fill the kettle over the max. fill line because the carafe will overflow.

WARNING: NEVER REMOVE THE COVER WHILE THE FAN MOTOR IS RUNNING, OR FOR 30 MINUTES AFTER IT STOPS. YOU COULD GET SEVERE BURNS FROM THE BOILING WATER OR STEAM.

WHEN YOU FILL WITH TAP WATER TO...	THE CYCLE TAKES ABOUT...
------------------------------------	--------------------------

Model 344800 (3 qt.)	5 hours
Model 344810 (1 gallon)	4 hours

4. Replace the cover on the kettle. Twist cover clockwise to lock. Plug the kettle into the base unit. Carry carefully and keep level to prevent splashing.
5. Set the carafe into place on base unit.
8. To pour water from carafe, open spout by pulling on center strip in direction of the arrow indicator near thumb position.
9. Store the carafe filled with product water in the refrigerator until you need it.
10. After the Purifier has cooled (wait for 30 minutes after the fan motor stops running) remove the kettle to clean.

CARE AND CLEANING OF YOUR WATER PURIFIER

KETTLE

After each use, rinse the inside with lukewarm tap water and remove any residue. Clean by wiping out the inside of the kettle with a damp cloth and rinse. If a deposit starts to form at the bottom, use Kenmore Water Purifier cleaner (see page 7). Remove the kettle from base unit. Fill kettle at the sink with hot water and follow the instructions on the cleaner bottle. Rub with a soft scouring pad and rinse thoroughly.

CAUTION: DO NOT IMMERSE THE PURIFIER OR KETTLE IN WATER.

CARAFE

Clean with mild dish detergent and soft cloth. Rinse thoroughly with water.

CLEANING EXTERIOR SURFACES

To keep your Purifier looking new, you should periodically clean the exterior plastic surfaces with a soft, damp cloth. DO NOT use any caustic cleaning solutions, scouring pads or powder because they will damage the plastic finish.

NOTICE THERE ARE NO USER SERVICEABLE PARTS INSIDE THE UNIT.
--

CHANGING THE CARBON FILTER (model 344810 only)

IMPORTANT: The purifier uses a carbon filter in the carafe cover to remove traces of odors before the purified water is collected in the carafe. The filters last about 2-3 months. A return of unwanted odor means the filter should be replaced. Order replacement carbon filters from Sears (see page 7).

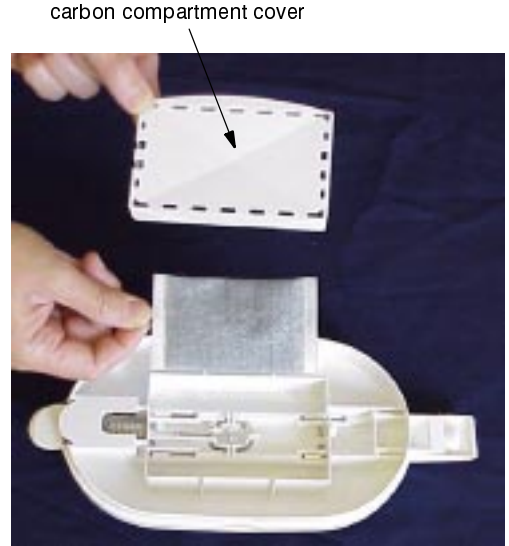
continued, page 6.

CARE AND CLEANING OF YOUR WATER PURIFIER

continued from page 5

TO REPLACE CARBON FILTER (unit may be operated with or without the carbon filter).

1. Remove the lid from the carafe.
2. Remove the carbon compartment cover by pulling on tabs.
3. Remove the used carbon filter and discard. Do not reuse carbon filter.
4. Rinse the inside of the carbon compartment with water.
5. Remove carbon filter from plastic bag and rinse under purified water for 30 seconds, so that it is wet on all surfaces.
6. Put new carbon filter in carbon compartment. Be sure carbon is evenly distributed within pouch.
7. Replace the carbon compartment cover and place the carafe lid on the carafe.
8. Replace carafe onto the base unit.
9. The next time you make purified water, discard the first batch of water which may have small, harmless, carbon fines in it.



NOTE: The physiological effects of the operation of this appliance, beneficial or otherwise, have not been investigated by Underwriters Laboratories. See Product Data Sheet for test data obtained from an independent laboratory.

TROUBLESHOOTING CHECK LIST

NOT MAKING ANY PURIFIED WATER	NOT MAKING ENOUGH PURIFIED WATER EACH BATCH	FLASHING INDICATOR	WATER LEAKS
1. Purifier power cord not plugged into electrical outlet.	1. Did not fill tank with water to the max. fill line.	1. Carafe flashing in display indicates carafe is not in position. ◆	1. Water receptacle in carafe cover is not open.
2. No power to electrical outlet.	2. Carafe is not in correct position.	2. Flashing red indicator light indicates kettle is not in position. ◆	2. Carafe cover is not in place.
3. Kettle not plugged into base receptacle.	3. Kettle cover is not locked into position.	3. Filter flashing in display indicates filter needs changing. ◆	3. Carafe is not in place.
4. Did not press reset or start button to start cycle.			
5. Did not fill the kettle with tap water.			
6. Carafe is not in place. ◆			

◆ Model 344810 only.

PRODUCT SPECIFICATIONS

Kenmore Model 344800	
Rating:	120 VAC / 60 Hz / 500 W
Filling Volume:	3 quarts
Production Capacity:	.16 gallon/hour (.7 liter/hour), 4 gallons/day
Dimensions:	15.4" width X 13.0" height X 10.5" depth
Weight:	11 lbs.
Kenmore Model 344810	
Rating:	120 VAC / 60 Hz / 800 W
Filling Volume:	1 gallon
Production Capacity:	.25 gallon/hour (1 liter/hour), 6 gallons/day
Dimensions:	14.5" width X 15.0" height X 10.5" depth
Weight:	13 lbs.

These products conform to ANSI/NSF 62 for the specific performance claims as verified and substantiated by test data.

REPLACEMENT PARTS

DESCRIPTION	PART NUMBER
Kenmore 3 qt. Replacement Carafe (Opaque)	42-34482
Kenmore 1 gallon Replacement Carafe (Clear)	42-34483
Kenmore Carbon Filter Replacement	42-34484
Kenmore Water Purifier Cleaner	42-34543

For replacement items contact your nearest Sears outlet.

Sears, Roebuck and Co.
Sears Merchandise Group
3333 Beverly Road
Hoffman Estates, IL 60179
1-800-426-9345